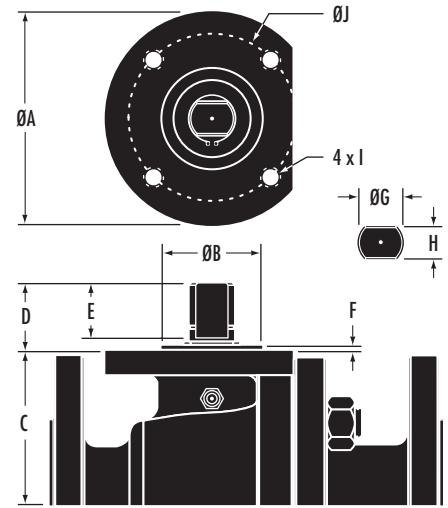


Actuator Mounting Data, Series 4500 & 6500, Class 150, 300 & 600

Series 4500 & 6500, 1"-6", Class 150, 300 & 600 (in.)

Valve Size	A	B	C	D	E	F	G +000/ -003	H +000/ -003	I	J	ISO 5211
Series 6500, Class 150/300, 1"-6"											
1	2.56	1.378	1.98	0.85	0.64	0.08	0.591	0.394	1/4-20 UNC	2.00	F05
1 1/2	3.54	1.771	2.59	1.10	0.71	0.08	0.767	0.551	5/16-18 UNC	2.75	F07
2	3.54	1.771	3.48	1.47	1.08	0.08	0.906	0.669	5/16-18 UNC	2.75	F07
3	4.92	2.755	4.30	1.50	1.08	0.08	0.906	0.669	3/8-16 UNC	4.00	F10
4	5.90	3.346	5.31	1.58	1.11	0.08	1.279	0.905	1/2-13 UNC	4.95	F12
6	6.88	3.937	7.05	2.24	1.70	0.08	1.633	1.062	5/8-11 UNC	5.50	F14
Series 6500, Class 600, 1"-4"											
1	2.56	1.378	1.98	0.85	0.64	0.08	0.591	0.394	1/4-20 UNC	2.00	F05
1 1/2	3.54	1.693	2.59	1.10	0.71	0.08	0.767	0.551	5/16-18 UNC	2.75	F07
2	3.54	1.771	3.48	1.48	1.08	0.08	0.906	0.669	5/16-18 UNC	2.75	F07
3	5.90	3.346	4.65	1.59	1.11	0.08	1.279	0.906	1/2-13 UNC	4.95	F12
4	5.90	3.937	5.83	2.20	1.70	0.08	1.633	1.062	1/2-13 UNC	4.95	F12
Series 4500, Class 150/300, 1 1/2"-6"											
1 1/2	2.56	1.378	1.94	0.85	0.64	0.08	0.591	0.394	1/4-20 UNC	2.00	F05
2	3.54	1.771	2.59	1.10	0.71	0.08	0.767	0.551	5/16-18 UNC	2.75	F07
3	3.54	1.771	3.48	1.47	1.08	0.08	0.906	0.669	5/16-18 UNC	2.75	F07
4	4.92	2.755	4.30	1.50	1.08	0.08	0.906	0.669	3/8-16 UNC	4.00	F10
6	5.90	3.346	5.31	1.58	1.11	0.08	1.279	0.905	1/2-13 UNC	4.95	F12
Series 4500, Class 600, 1 1/2"-6"											
1 1/2	2.56	1.378	1.94	0.85	0.64	0.08	0.591	0.394	1/4-20 UNC	2.00	F05
2	3.54	1.771	2.60	1.07	0.71	0.08	0.768	0.551	5/16-18 UNC	2.75	F07
3	3.54	1.771	3.48	1.48	1.08	0.08	0.906	0.669	5/16-18 UNC	2.75	F07
4	5.90	3.346	4.65	1.59	1.11	0.08	1.279	0.906	1/2-13 UNC	4.95	F12
6	5.90	3.937	5.83	2.20	1.70	0.08	1.633	1.062	1/2-13 UNC	4.95	F12



Flow Coefficients (C_v) and Pressure Conversion Chart

Series	Size (in.)									
	1/2	3/4	1	1 1/2	2	3	4	6	8	10
4410, 4430, 4460, 4510, 4530, 4560	—	17	36	70	180	350	880	1550	3580	6675
5410 with insert downstream	9	15	28	108	158	337	489	973	1255	2110
5410 with insert upstream	8	14	27	106	153	317	449	899	1180	2005
5430 with insert downstream	11	18	33	130	190	404	580	1168	1580	2600
5430 with insert upstream	10	16	30	127	183	380	540	1070	1400	2370
6410, 6430, 6460, 6510, 6530, 6560	28	52	90	250	480	1200	2250	5400	9600	16,000

Flow Coefficients (C_v) Factor

Capacity factors for the Series 4400, 5400, 6400, 4500 and 6500 valves listed above are to be used as a reference for correct valve sizing. C_v equals the volume of water in gallons per minute that will flow through a given opening with a pressure drop of one psi.

Pressure Conversion

Directions: These formulas may be used to convert from one scale to another:

- psi x .06894757 = bar bar x 14.50377 = psi
- psi x .07030697 = Kg/cm² Kg/cm² x 14.22334 = psi
- psi x 6894.757 = Pascal Pascal x .0001450377 = psi